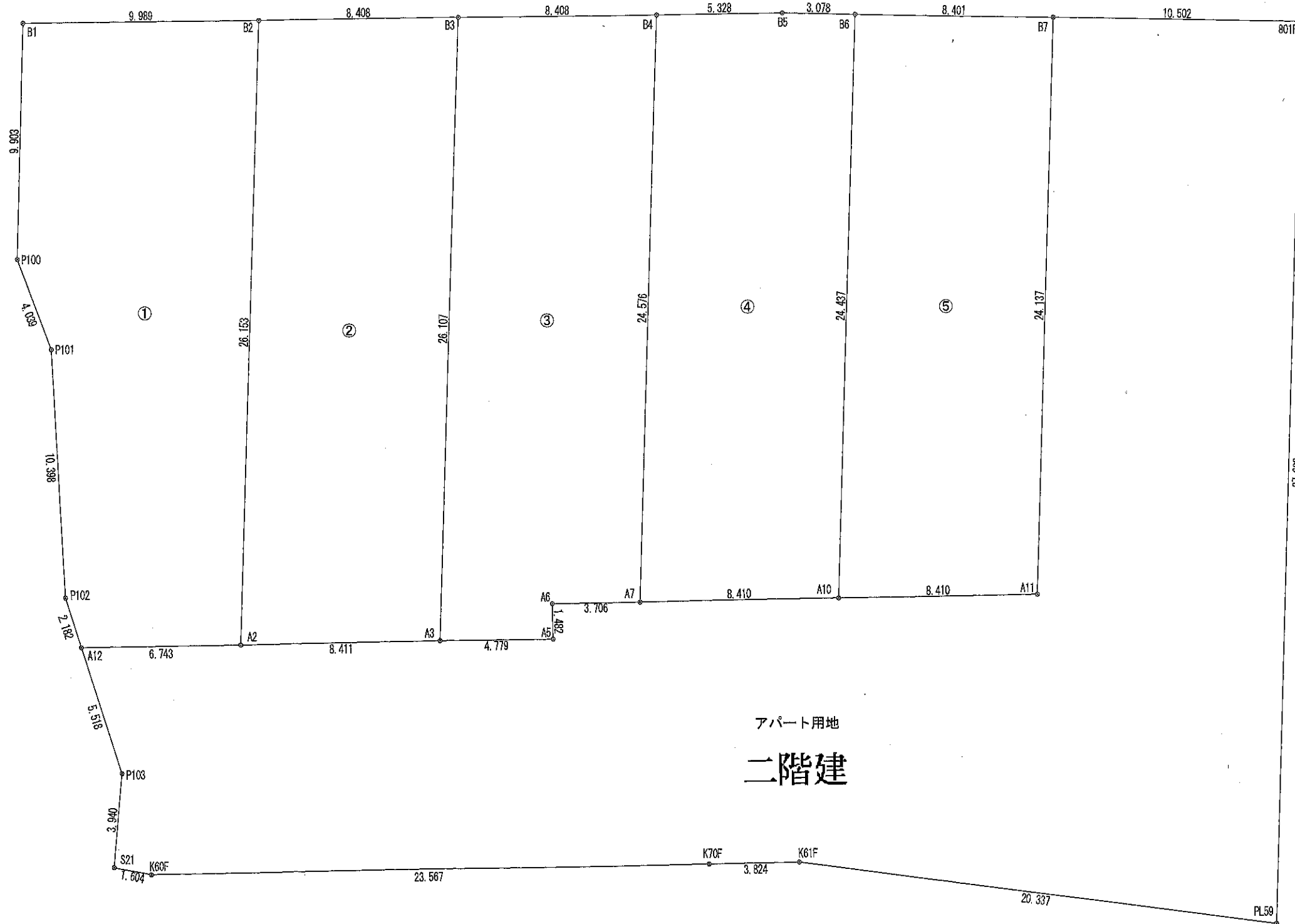
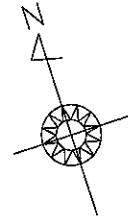


鈴鹿市神戸四丁目669地内
縮尺 1/200



アパート用地

二階建

座標求積表

地番 ①			
測点	Xn	Yn	(Xn+1 - Xn-1)Yn
B1	-124437.824	52937.032	-336573.649456
P100	-124447.158	52933.725	-707670.969525
P101	-124451.193	52933.905	-745574.051925
P102	-124461.243	52931.236	-647454.878752
A12	-124463.425	52931.232	-219876.337728
A2	-124465.397	52937.680	1197715.010000
B2	-124440.800	52946.567	1459895.691891
			倍面積
			面積
			地積
			坪数

地番 ②			
測点	Xn	Yn	(Xn+1 - Xn-1)Yn
B2	-124440.800	52946.567	-1169748.504731
A2	-124465.397	52937.680	-1432387.745440
A3	-124467.858	52945.723	1169729.858239
B3	-124443.304	52954.594	1432845.404452
			倍面積
			面積
			地積
			坪数

地番 ③			
測点	Xn	Yn	(Xn+1 - Xn-1)Yn
B3	-124443.304	52954.594	-1167595.843106
A3	-124467.858	52945.723	-1374047.403296
A5	-124469.256	52950.293	1059.005860
A6	-124467.838	52950.725	17632.591425
A7	-124468.923	52954.269	1166529.591801
B4	-124445.809	52962.620	1356849.361780
			倍面積
			面積
			地積
			坪数

地番 ④			
測点	Xn	Yn	(Xn+1 - Xn-1)Yn
B4	-124445.809	52962.620	-1140126.320740
A7	-124468.923	52954.269	-1354305.429675
A10	-124471.384	52962.311	1086892.546342
B6	-124448.401	52970.615	1270659.112620
B5	-124447.396	52967.706	137292.293952
			倍面積
			面積
			地積
			坪数

地番 ⑤			
測点	Xn	Yn	(Xn+1 - Xn-1)Yn
B6	-124448.401	52970.615	-1072072.276985
A10	-124471.384	52962.311	-1347626.003395
A11	-124473.846	52970.353	1072066.974367
B7	-124451.145	52978.555	1348039.331975
			倍面積
			面積
			地積
			坪数

地番 アパート用地			
測点	Xn	Yn	(Xn+1 - Xn-1)Yn
B7	-124451.145	52978.555	-1021002.711960
A11	-124473.846	52970.353	-1072066.974367
A10	-124471.384	52962.311	260733.457053
A7	-124468.923	52954.269	187775.837874
A6	-124467.838	52950.725	-17632.591425
A5	-124469.256	52950.293	-1059.005860
A3	-124467.858	52945.723	204317.545057
A2	-124465.397	52937.680	234672.735440
A12	-124463.425	52931.232	-187694.148672
P103	-124468.943	52931.222	-483950.162746
S21	-124472.568	52929.679	-232043.712736
K60F	-124473.327	52931.092	-405081.647076
K70F	-124480.221	52953.628	-423629.024000
K61F	-124481.327	52957.289	-518822.560333
PL59	-124490.018	52975.675	1417258.233275
801F	-124454.574	52988.481	2059821.221913
			倍面積
			面積
			地積
			坪数

合計 1871.9256935